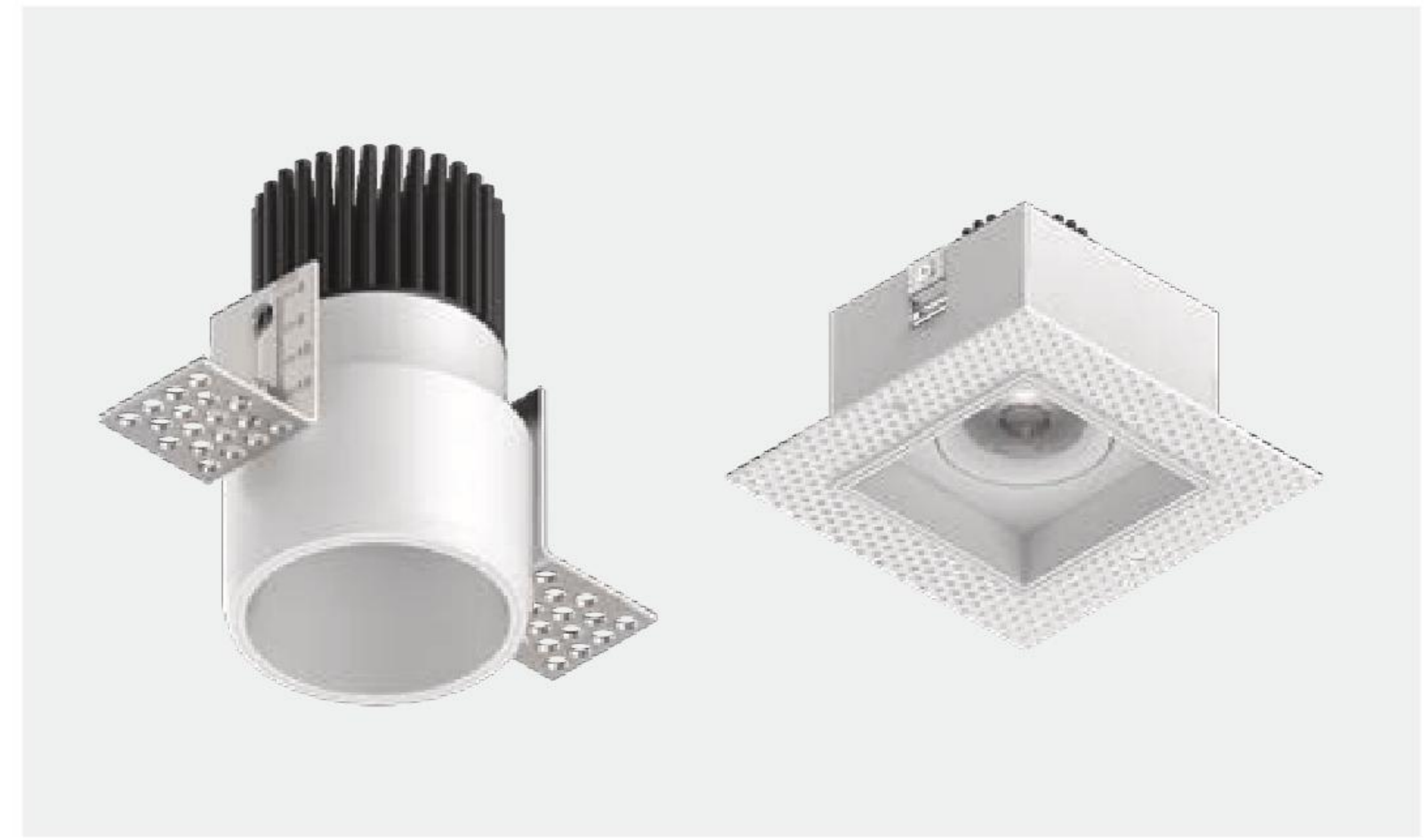


MINI WELL



IL PRODOTTO RISPONDEnte AI REQUISITI PER EDIFICI PUBBLICI
D.M. 11 OTT 2017 (C.A.M. Edilizia)

THE PRODUCT COMPLIES WITH THE REQUIREMENTS FOR
PUBLIC BUILDINGS, MINISTERIAL DECREE OF 11th OCT 2017



Downlight LED per incasso da rasare, installabile su cartongesso di spessore 5-15 mm.

Corpo tondo e controtelaio in pressofusione di alluminio verniciato.

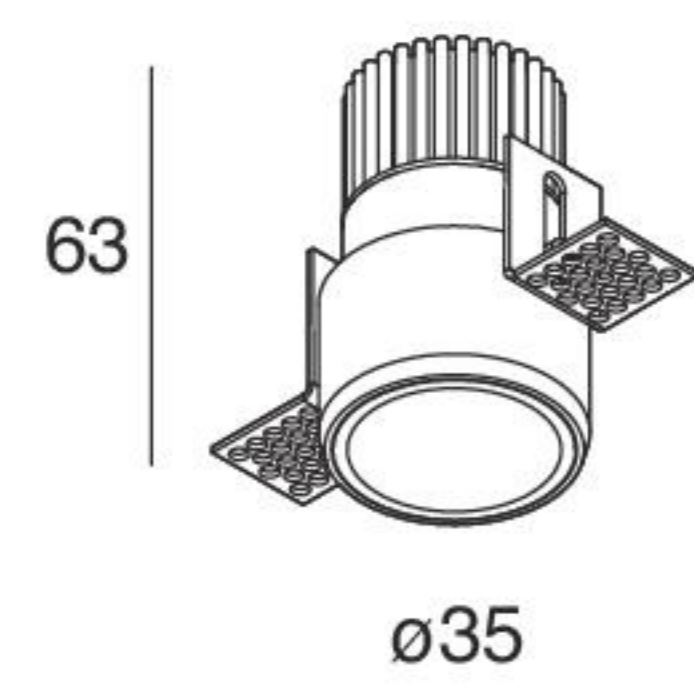
Corpo quadrato e controtelaio in acciaio verniciato. Dissipatore in lega di alluminio anodizzato.

Alimentatore elettronico 500mA da ordinare a parte.

Frameless LED downlight, to be installed on 5-15 mm thickness plasterboard.

Round body and subframe in painted die-cast aluminium. Square body and subframe in painted steel. Heat sink in anodized aluminum alloy.

Electronic driver 500mA to be ordered separately.

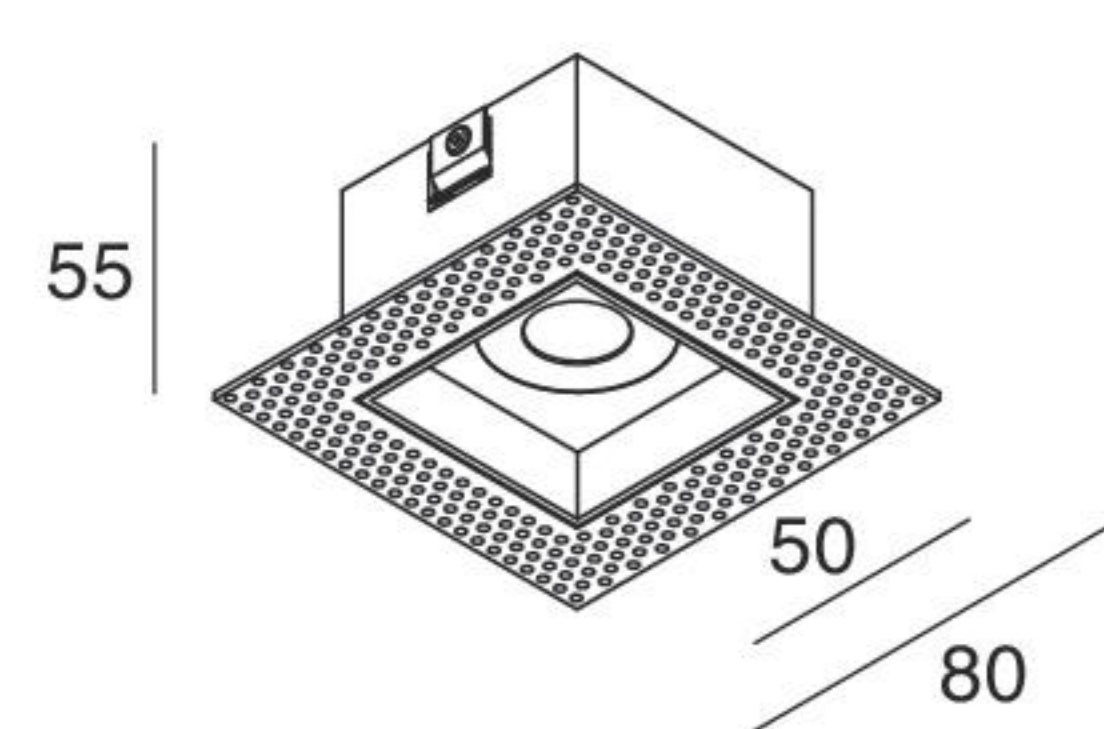
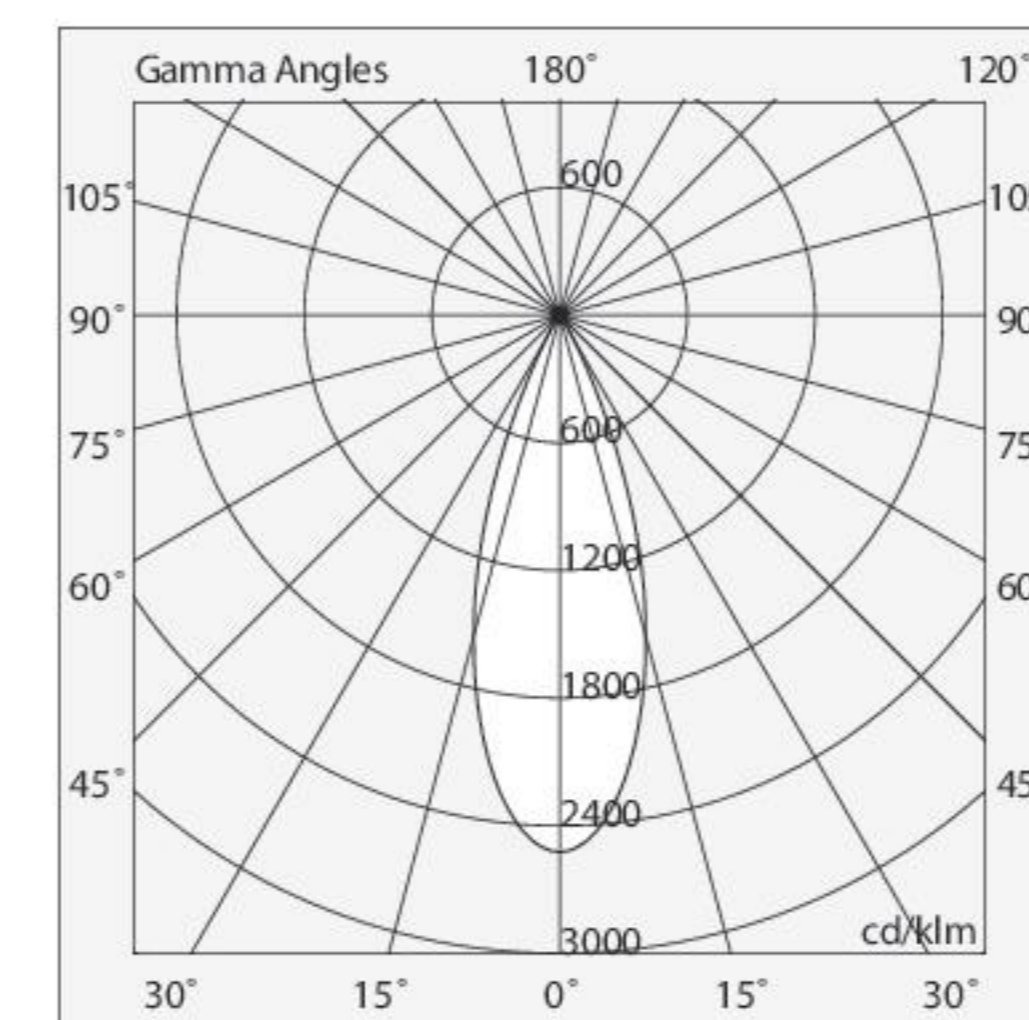


MINI WELL TONDO

500mA

UGR <19*

POWER	BEAM	FLUX (white - black)	3000K	*
5W	36°	326 - 273 lm	<input type="checkbox"/>	<input checked="" type="checkbox"/> .02



MINI WELL QUADRATO

500mA

UGR <19*

POWER	BEAM	FLUX (white - black)	3000K	*
5W	36°	381 - 365 lm	<input type="checkbox"/>	<input checked="" type="checkbox"/> .02

