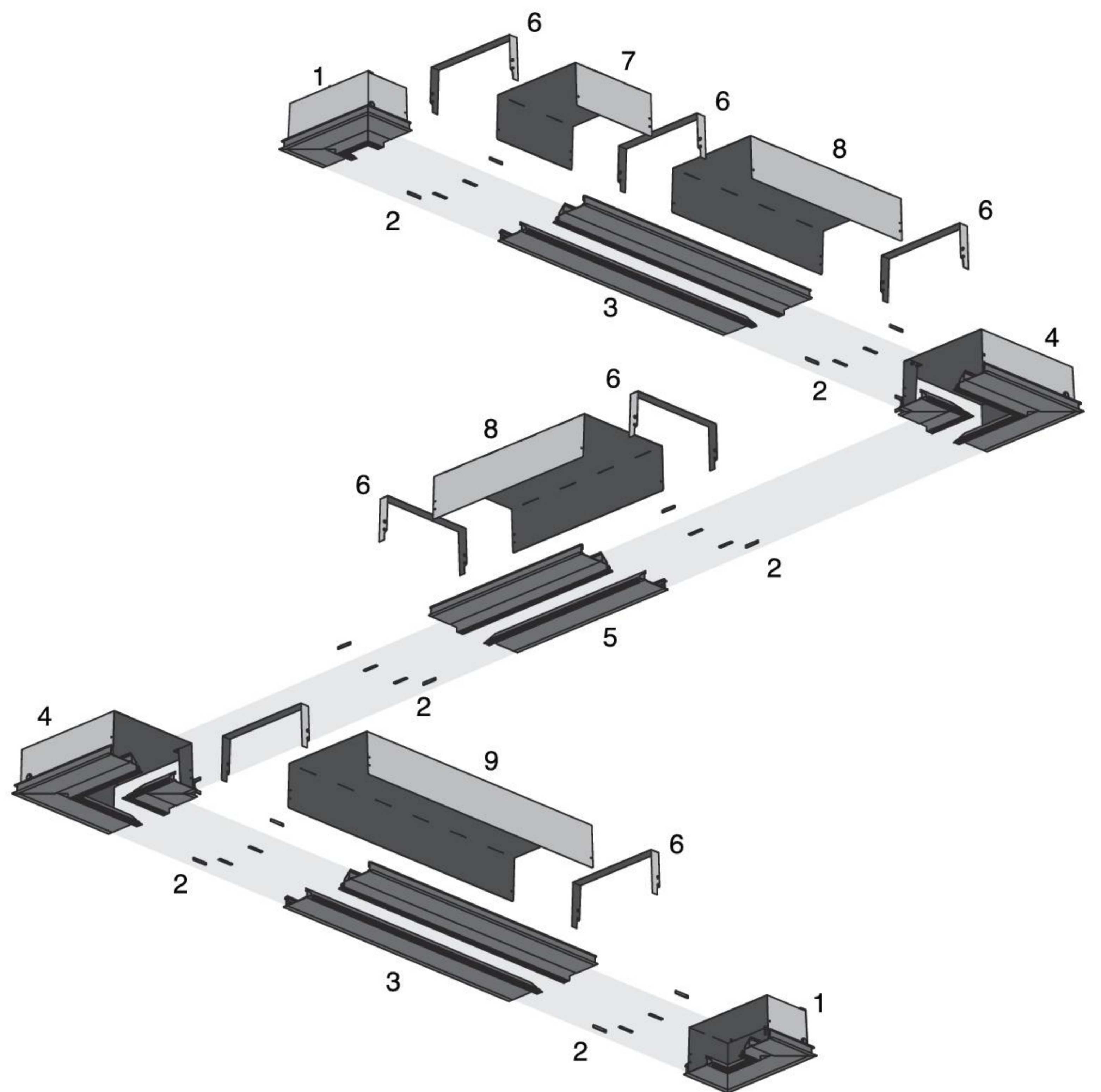


Integrated architecture solutions

- 1 | Final guard
- 2 | Fixing linear brackets
- 3 | Linear profiles (900 mm)
- 4 | L-shaped guard
- 5 | Linear profiles (300 mm)
- 6 | Guard
- 7 | Linear guard (300 mm)
- 8 | Linear guard (600 mm)
- 9 | Linear guard (900 mm)



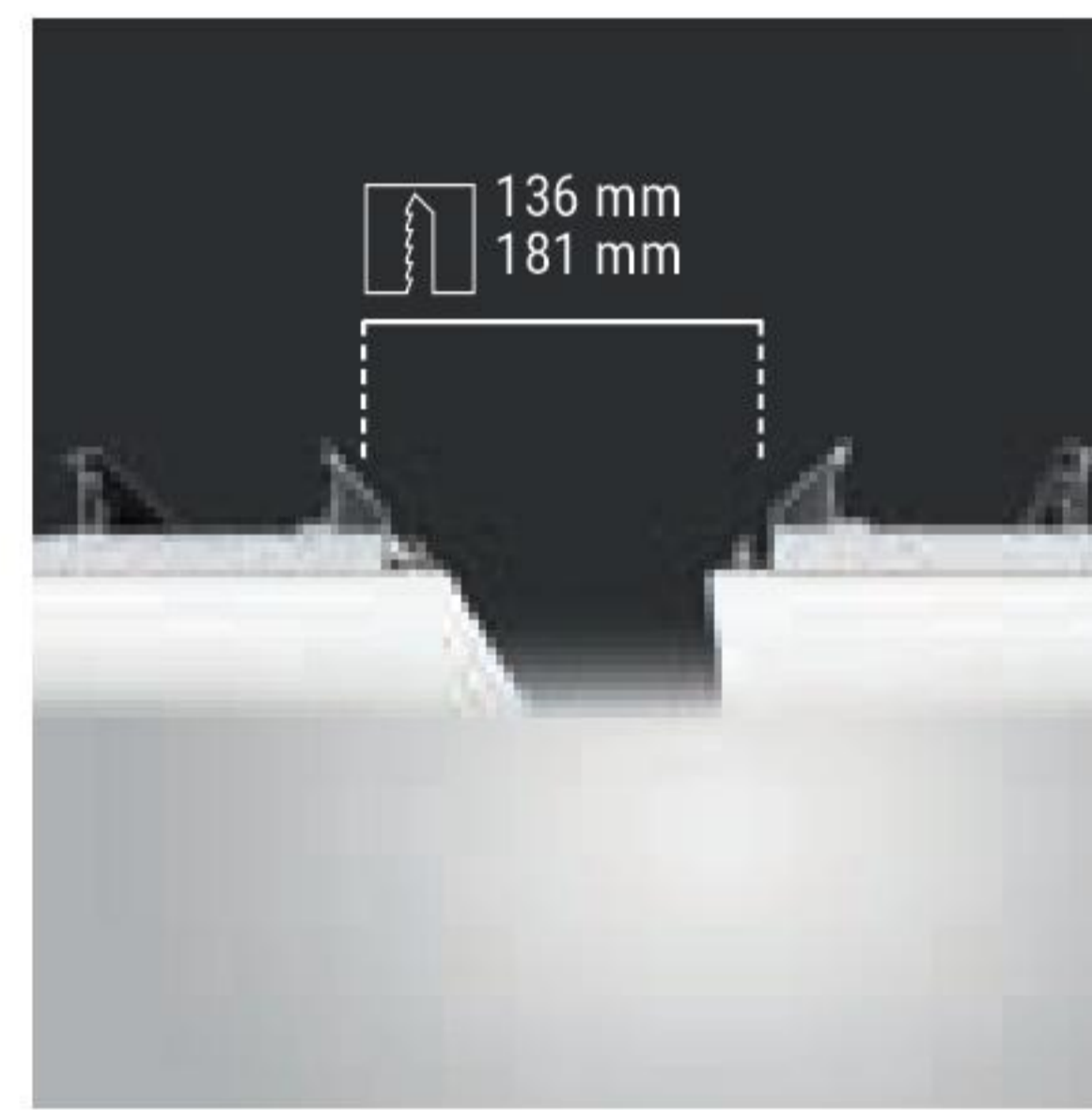
Main features



The projectors can be power-supplied by a single line irrespective of the number thereof.



Six different equipment available, depending on the lighting technology needs.

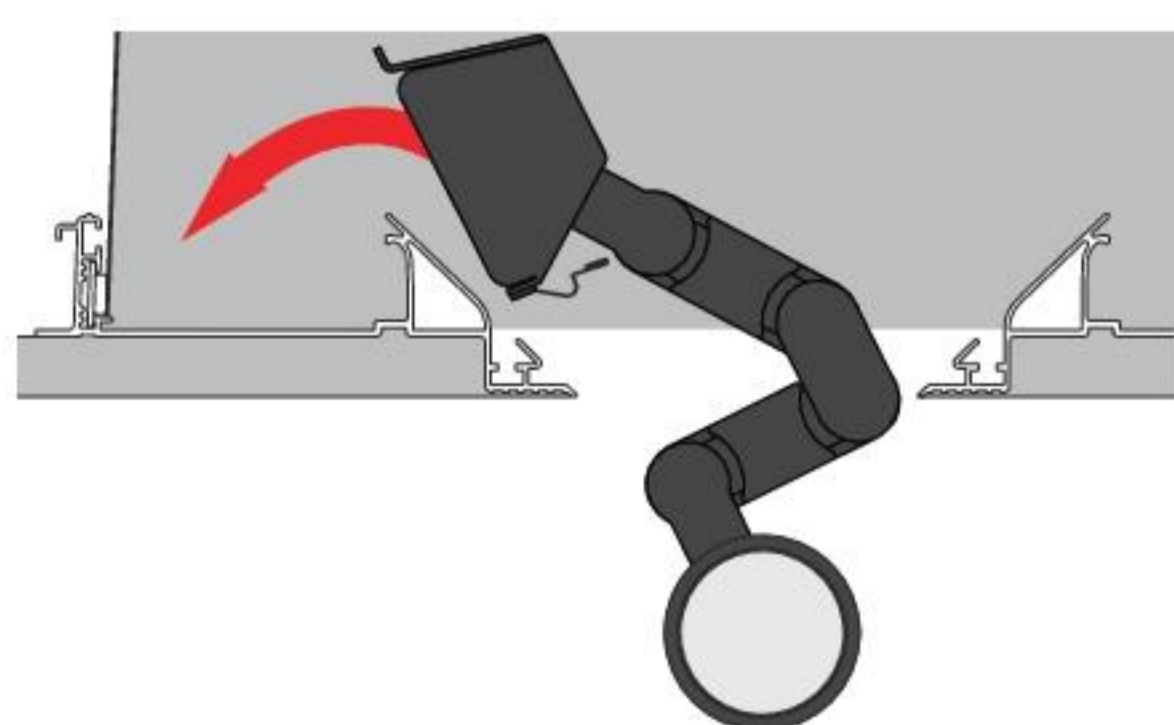


The structure is combined based on the size of the guard.



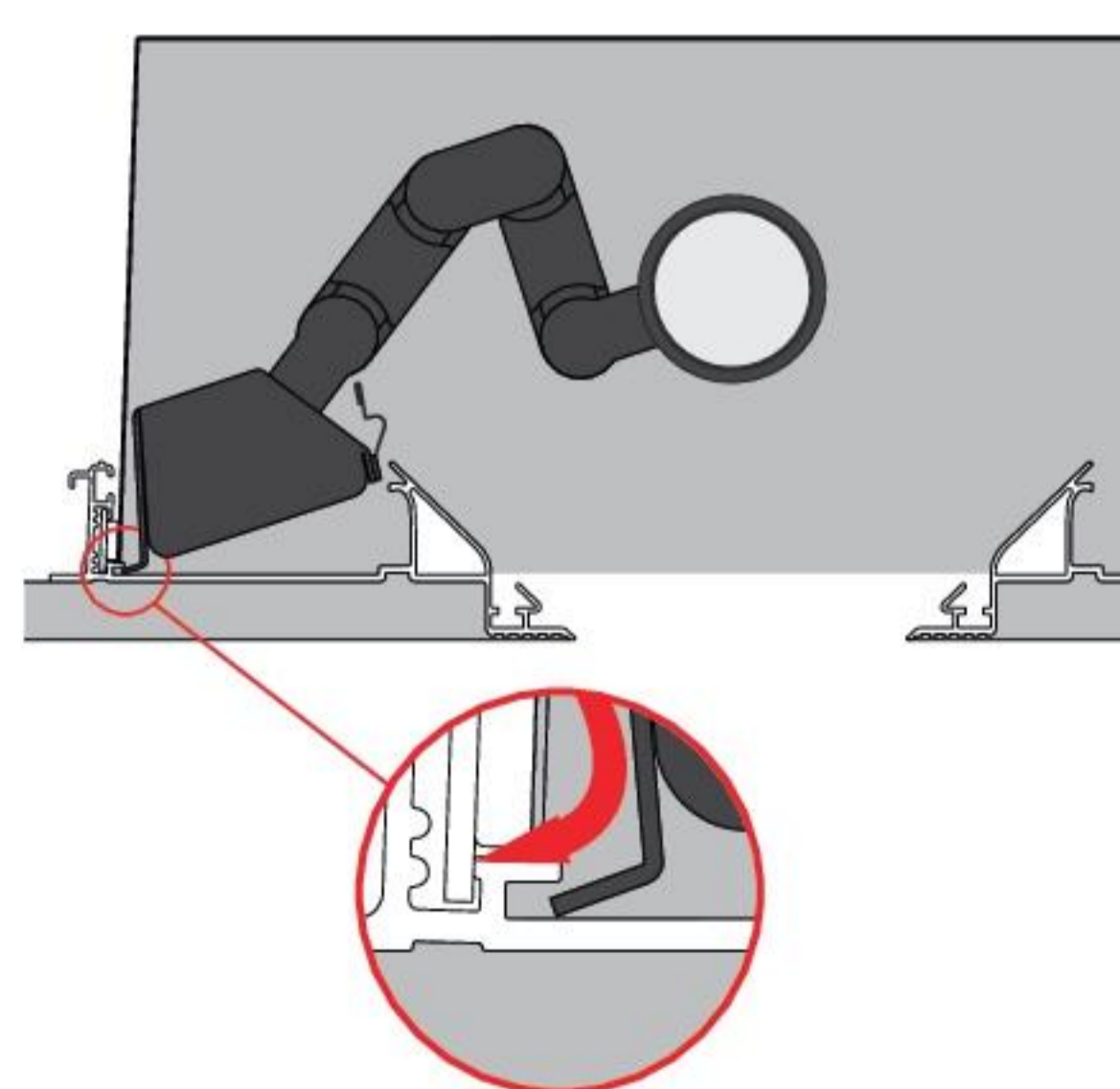
"PLUG & PLAY" connection with power supply unit already wired.

PHASE 1



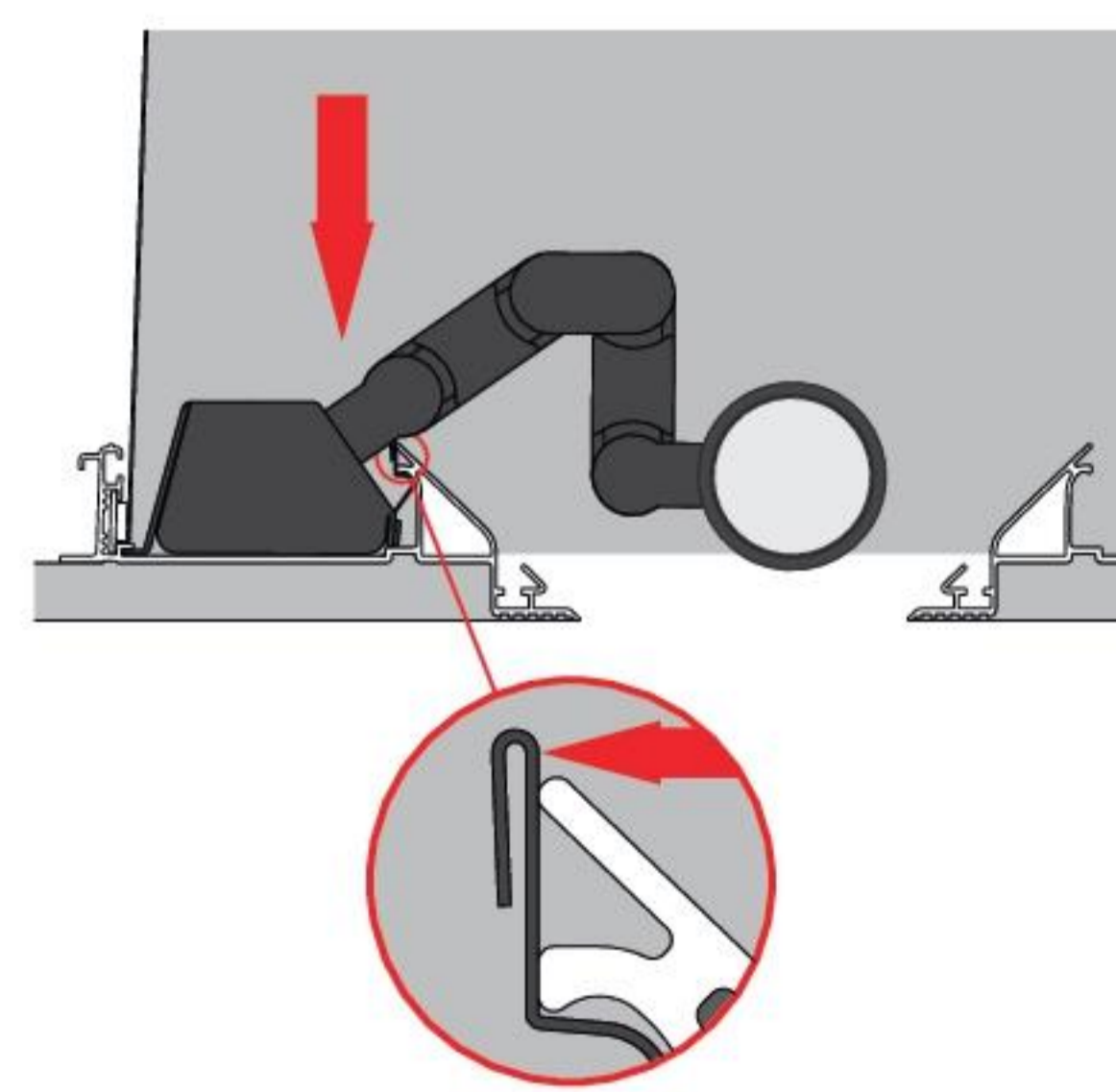
Once the structure has been arranged on the dropped ceiling, the lighting body is inserted: the lighting body is located at one end, while the fixing base is located at the other.

PHASE 2



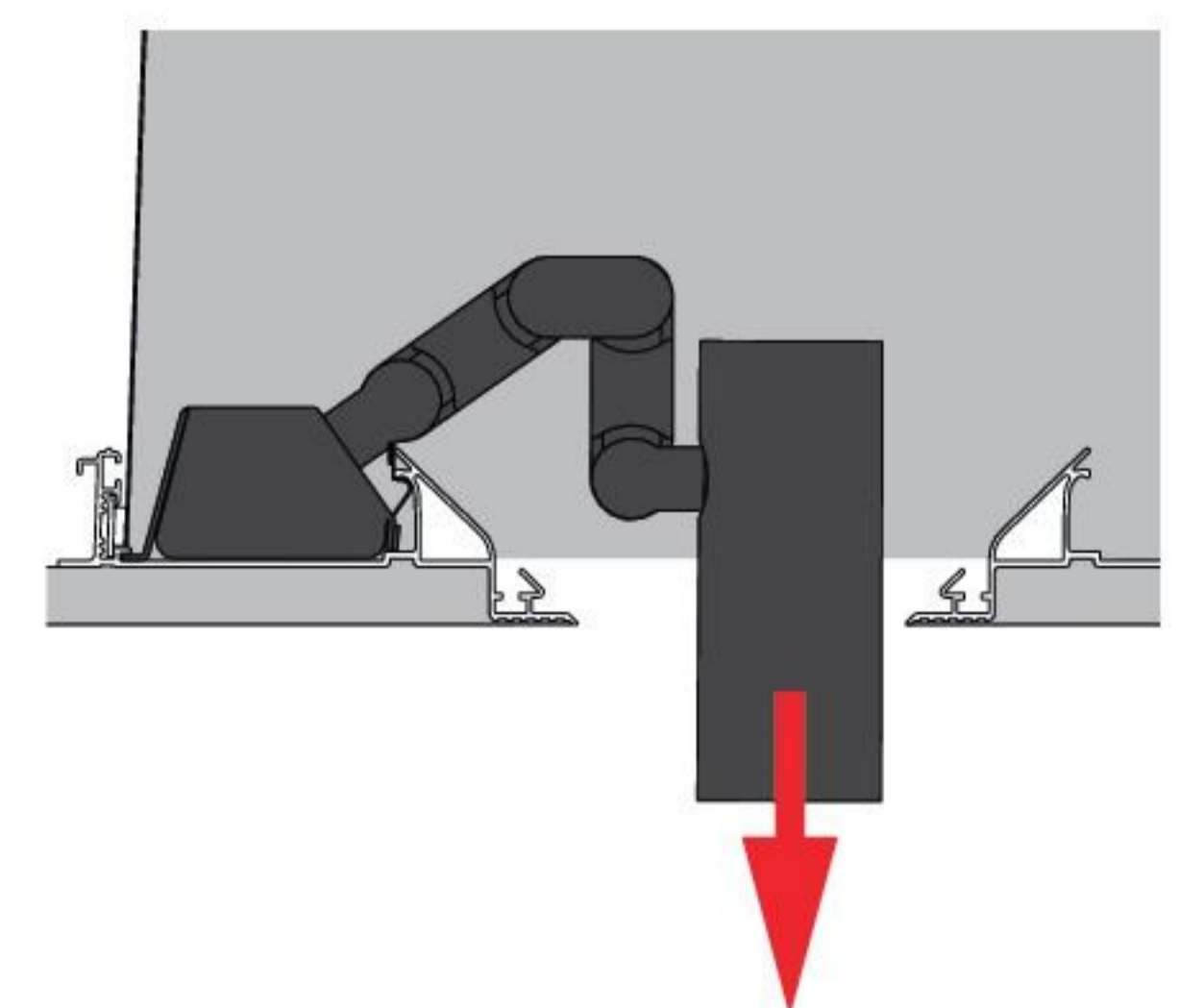
Fixing occurs by coupling, by inserting the end of the base into the inner seat of the profile.

PHASE 3



The process is completed by pressing the base downwards in proximity of the point where the swivel arm starts.

PHASE 4



The lighting body is lastly ready to be removed and directed, as well as moved position-wise along the structure, by pressing two flaps and sliding the fixing base.