

# POINT SPOT

design Lucitalia



Point Spot è un proiettore per illuminazione d'accento dalle ridottissime dimensioni e a bassa tensione. Ideale per enfatizzare elementi architettonici; grazie al suo indice di protezione IP 67, risulta inoltre particolarmente indicato per luoghi dove si presenta necessaria un'elevata protezione contro umidità e acqua quali bagni, spa, docce etc. disponibile anche nella versione in acciaio inox.

*Point Spot is a projector for accent lighting. It's elegant design makes it ideal for lighting commercial and residential spaces, offices and museums. Particularly suitable for environments where an high IP rate is compulsory such as bathrooms, spas, showers, etc .. available in version round stainless steel.*



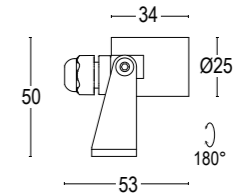



# POINT SPOT RD INOX




# POINT SPOT 1 RD INOX

IP68 - Classe III - CE / F



	3000K	4000K
	<b>20544---31</b> <b>20544---31.A</b> 1-10V <b>20544---31.D</b> DALI	<b>20544---41</b> <b>20544---41.A</b> 1-10V <b>20544---41.D</b> DALI
	<b>1W LED 120 lm CRI &gt; 85</b> 16° ^ max 350mA alimentatore elettronico SELV non incluso remote SELV electronic driver not included	

	3000K	4000K
	<b>20545---31</b> <b>20545---31.A</b> 1-10V <b>20545---31.D</b> DALI	<b>20545---41</b> <b>20545---41.A</b> 1-10V <b>20545---41.D</b> DALI
	<b>1W LED 120 lm CRI &gt; 85</b> 32° ^ max 350mA alimentatore elettronico SELV non incluso remote SELV electronic driver not included	

## ACCESSORI / ACCESSORIES

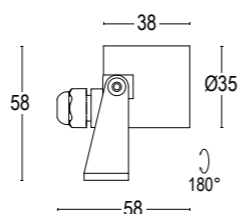


Colore standard 1 settimana  
 Standard color 1 week

 **.40** Acciaio  
 Stainless steel

# POINT SPOT 2 RD INOX

IP68 - Classe III - CE / F



**3000K**                      **4000K**

<b>20536---31</b>	<b>20536---41</b>
<b>20536---31.A</b> 1-10V	<b>20536---41.A</b> 1-10V
<b>20536---31.D</b> DALI	<b>20536---41.D</b> DALI

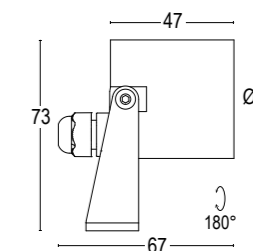
**1,5W LED 170 lm CRI > 85**  
 13° ^  
 max 500mA  
 alimentatore elettronico SELV non incluso  
*remote SELV electronic driver not included*

<b>20537---31</b>	<b>20537---41</b>
<b>20537---31.A</b> 1-10V	<b>20537---41.A</b> 1-10V
<b>20537---31.D</b> DALI	<b>20537---41.D</b> DALI

**1,5W LED 170 lm CRI > 85**  
 47° ^  
 max 500mA  
 alimentatore elettronico SELV non incluso  
*remote SELV electronic driver not included*

# POINT SPOT 3 RD INOX

IP68 - Classe III - CE / F



**3000K**                      **4000K**

<b>20550---31</b>	<b>20550---41</b>
<b>20550---31.A</b> 1-10V	<b>20550---41.A</b> 1-10V
<b>20550---31.D</b> DALI	<b>20550---41.D</b> DALI

**2W LED 225 lm CRI > 85**  
 10° ^  
 max 700mA  
 alimentatore elettronico SELV non incluso  
*remote SELV electronic driver not included*

<b>20551---31</b>	<b>20551---41</b>
<b>20551---31.A</b> 1-10V	<b>20551---41.A</b> 1-10V
<b>20551---31.D</b> DALI	<b>20551---41.D</b> DALI

**2W LED 225 lm CRI > 85**  
 37° ^  
 max 700mA  
 alimentatore elettronico SELV non incluso  
*remote SELV electronic driver not included*

## ACCESSORI / ACCESSORIES



**22008**  
 Alimentatore IP20 500mA  
 1 per max 10 Point 2  
 LED driver IP20 500mA  
 1 for max 10 Point 2



**22080**  
 Connettore rapido IP 68  
 IP 68 fast connector

Colore standard 1 settimana  
 Standard color 1 week

● **.40** Acciaio  
 Stainless steel

## ACCESSORI / ACCESSORIES



**22014**  
 Alimentatore IP20 700mA  
 1 per max 10 Point 3  
 LED driver IP20 700mA  
 1 for max 10 Point 3



**22080**  
 Connettore rapido IP 68  
 IP 68 fast connector

Colore standard 1 settimana  
 Standard color 1 week

● **.40** Acciaio  
 Stainless steel