

titano

LED

powered by
Citizen Electronics® LED
Transformer included

example code:

art.	finishing	size	LED	○
824	K	100	L10	H

COUNTRY example code:

art.	finishing	size	LED	○
824	K	100	L10	H

art.
824

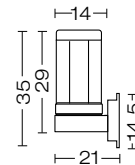
design **Ufficio Tecnico Landa**

OHIM:
European Patent No.
000508106-0002

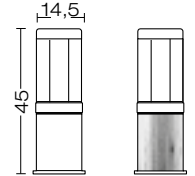


corpo acciaio inox
e alluminio estruso
body stainless steel and
extruded aluminium
corps acier inoxydable
en aluminium extrudé
cuerpo acero inox y
aluminio extrusionado
Körper Edelstahl und
Aluminium

diffusore policarbonato
trasparente
diffuser transparent
polycarbonate
diffuser polycarbonate
transparent
difusor policarbonato
transparente
Diffuser Polykarbonat klar



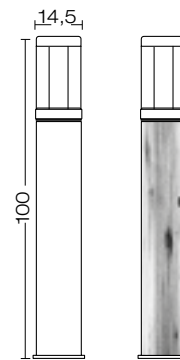
824.00L10
.00L10H



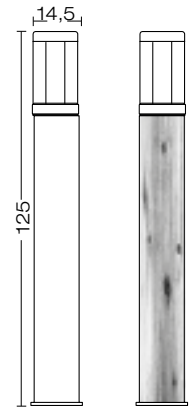
824.045L10
.045L10H K045L10
K045L10H



824.075L10
.075L10H K075L10
K075L10H



824.100L10
.100L10H K100L10
K100L10H



824.125L10
.125L10H K125L10
K125L10H

FOR TECHNICAL DETAILS VISIT
www.landa.it

IP65

code 824.00L10 IP43
824.00L10H

960°

FINISHING

K
dettagli / details
/ details detalles
/ details:
p.A58 - A59

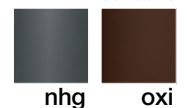


code 824K....

Wood that isn't wood

Processo produttivo non inquinante
Production process is not polluting
C'est un procédé productif non polluant
Proceso productivo no contaminante
Umweltfreundlicher Herstellungsprozess

COLOURS



nhg

oxi

ELECTRIFICATION

LED

dettagli /
details / details
detales / details:
p.A54 - A55

Energy efficiency classes

L10
LED 10 W
5000K
1300LM
Ra80

○
A++ ÷ A

L10H
LED 10 W
3000K
1100LM
Ra80

○
A++ ÷ A

titano

Projectors

Recessed

NEW

Contemporary

Traditional

CONTEMPORARY



Project by: Martin Fukna OMS - SK



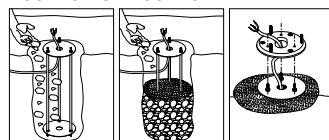
Accessories on request not available for: 824.00L10 - 824.00L10H



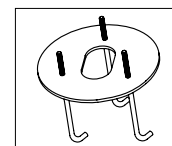
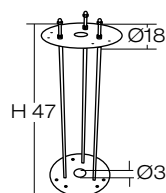
code 0404M004
Single connection IP68



code 0404M003
Loop in loop out IP68



Root Mounting Kit code 00A400



code 00A400.01P
Anchor Bolt

