

morphis

LED

powered by
Citizen Electronics® LED
Transformer included

example code:

art.	LED	○	size	colour
179	L24	H	.01	ngg

art.	electrification	size	colour
179	H70	.01	ngr

art.
179

designers **Innocenzo Rifino
& Lorenzo Ruggieri**

OHIM:
European Patent No.
001810037-001

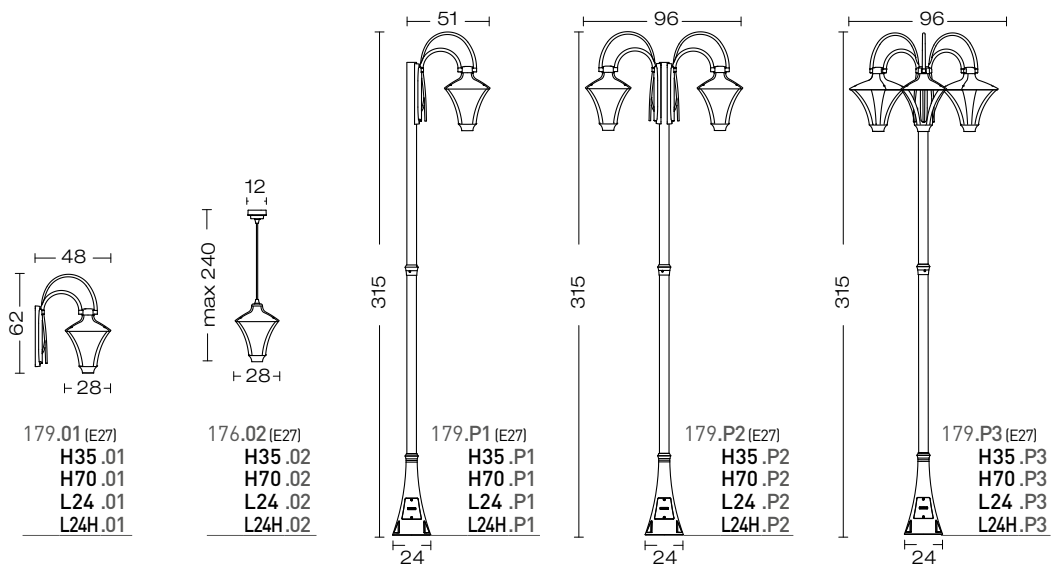
Chinese Patent No.
HC-IP Agency Co., LTD
CN - 302520755 S

corpo **alluminio pressofuso**
body in die casting aluminium
corps en aluminium moulé
sous pression
cuerpo aluminio inyectado
Körper aus Aluminium-
Druckguss

diffusore **polycarbonato**
trasparente
diffuser transparent
polycarbonate
diffuser polycarbonate
transparent
difusor polycarbonato
transparente
Diffuser Polykarbonat klar

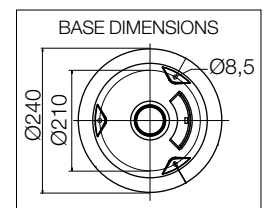
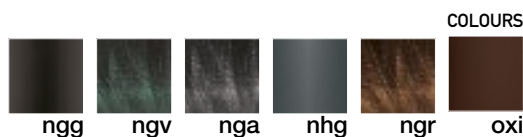


175
dettagli / details / details
detales / details: p.87



FOR TECHNICAL DETAILS VISIT
www.landa.it

IP65 960°



ELECTRIFICATION

LED

dettagli / details / details
detales / details:
p.A54 - A55

Energy efficiency classes

L24 LED 24 W 5000K 3040LM Ra70	L24H LED 24 W 3000K 2440LM Ra85	E27 max 30 W 5,5 19,5	H35 1x35 W G12 metal halide	H70 1x70 W E27 metal halide
A++ ÷ A	A++ ÷ A	A+ ÷ E	A+ ÷ C	A+ ÷ C

Included:



code **0404M004**
Single connection IP68

morphis

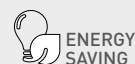
Projectors

Recessed

Contemporary

Traditional

CONTEMPORARY



ENERGY SAVING

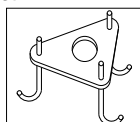
83



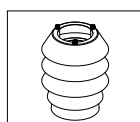
Accessories on request:



code 0404M003
Loop in loop out IP68

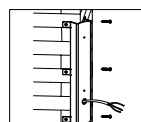


code 00A170.01P
Anchor Bolt



code 00KR175
Only for: E27, F32, H35, H70

refrattore
refractor
réfracteur
refractor
Refraktor



code 00596

angoliera
corner bracket
patte d'angle
esquinera
Eckhalterungen

