

# POINT SPOT

design Lucitalia



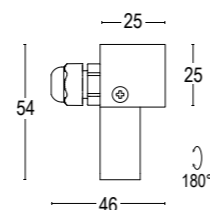
Point Spot è un proiettore per illuminazione d'accento dalle ridottissime dimensioni e a bassa tensione. Ideale per enfatizzare elementi architettonici; grazie al suo indice di protezione IP 67, risulta inoltre particolarmente indicato per luoghi dove si presenta necessaria un'elevata protezione contro umidità e acqua quali bagni, spa, docce etc. disponibile anche nella versione in acciaio inox.

*Point Spot is a projector for accent lighting. It's elegant design makes it ideal for lighting commercial and residential spaces, offices and museums. Particularly suitable for environments where an high IP rate is compulsory such as bathrooms, spas, showers, etc .. available in version round stainless steel.*



# POINT SPOT 1 SQ

IP67 - Classe III - CE / F



**3000K** **4000K**

<b>20547---.31</b>	<b>20547---.41</b>
<b>20547---.31.A</b> 1-10V	<b>20547---.41.A</b> 1-10V
<b>20547---.31.D</b> DALI	<b>20547---.41.D</b> DALI

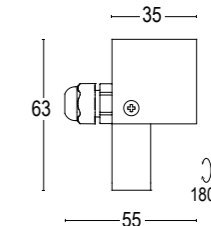
**1,5W LED 170 lm CRI > 85**  
 16° ^  
 max 500mA  
 alimentatore elettronico SELV non incluso  
*remote SELV electronic driver not included*

<b>20546---.31</b>	<b>20546---.41</b>
<b>20546---.31.A</b> 1-10V	<b>20546---.41.A</b> 1-10V
<b>20546---.31.D</b> DALI	<b>20546---.41.D</b> DALI

**1,5W LED 170 lm CRI > 85**  
 32° ^  
 max 500mA  
 alimentatore elettronico SELV non incluso  
*remote SELV electronic driver not included*

# POINT SPOT 2 SQ

IP67 - Classe III - CE / F



**3000K** **4000K**

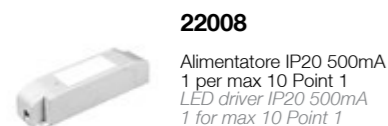
<b>20549---.31</b>	<b>20549---.41</b>
<b>20549---.31.A</b> 1-10V	<b>20549---.41.A</b> 1-10V
<b>20549---.31.D</b> DALI	<b>20549---.41.D</b> DALI

**2W LED 225 lm CRI > 85**  
 13° ^  
 max 700mA  
 alimentatore elettronico SELV non incluso  
*remote SELV electronic driver not included*

<b>20548---.31</b>	<b>20548---.41</b>
<b>20548---.31.A</b> 1-10V	<b>20548---.41.A</b> 1-10V
<b>20548---.31.D</b> DALI	<b>20548---.41.D</b> DALI

**2W LED 225 lm CRI > 85**  
 47° ^  
 max 700mA  
 alimentatore elettronico SELV non incluso  
*remote SELV electronic driver not included*

## ACCESSORI / ACCESSORIES



**22008**  
 Alimentatore IP20 500mA  
 1 per max 10 Point 1  
 LED driver IP20 500mA  
 1 for max 10 Point 1



**22080**  
 Connettore rapido IP 68  
 IP 68 fast connector

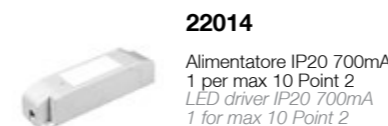
Colore standard 1 settimana  
 Standard color 1 week

○ **.01** Bianco  
 White (matt)

Colore su richiesta 2 settimane  
 Upon request color 2 weeks

● **.19** Grigio argento  
 Silver grey (matt)  
 ● **.22** Nero  
 Black (matt)  
 ● **.45** Ruggine  
 Rust

## ACCESSORI / ACCESSORIES



**22014**  
 Alimentatore IP20 700mA  
 1 per max 10 Point 2  
 LED driver IP20 700mA  
 1 for max 10 Point 2



**22080**  
 Connettore rapido IP 68  
 IP 68 fast connector

Colore standard 1 settimana  
 Standard color 1 week

○ **.01** Bianco  
 White (matt)

Colore su richiesta 2 settimane  
 Upon request color 2 weeks

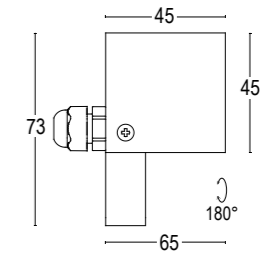
● **.19** Grigio argento  
 Silver grey (matt)  
 ● **.22** Nero  
 Black (matt)  
 ● **.45** Ruggine  
 Rust


# POINT SPOT



# POINT SPOT 3 SQ

IP67 - Classe III - CE / F




	3000K	4000K
	<b>20542---31</b> <b>20542---31.A</b> 1-10V <b>20542---31.D</b> DALI	<b>20542---41</b> <b>20542---41.A</b> 1-10V <b>20542---41.D</b> DALI

**3W LED 315 lm CRI > 85**  
10° ^  
max 1050mA  
alimentatore elettronico SELV non incluso  
*remote SELV electronic driver not included*

	3000K	4000K
	<b>20543---31</b> <b>20543---31.A</b> 1-10V <b>20543---31.D</b> DALI	<b>20543---41</b> <b>20543---41.A</b> 1-10V <b>20543---41.D</b> DALI

**3W LED 315 lm CRI > 85**  
37° ^  
max 1050mA  
alimentatore elettronico SELV non incluso  
*remote SELV electronic driver not included*

	3000K	4000K
	<b>20541---31</b> <b>20541---31.A</b> 1-10V <b>20541---31.D</b> DALI	<b>20541---41</b> <b>20541---41.A</b> 1-10V <b>20541---41.D</b> DALI

**6,5W LED 705 lm CRI > 85**  
28° ^  
max 350mA  
alimentatore elettronico SELV non incluso  
*remote SELV electronic driver not included*

	3000K	4000K
	<b>20540---31</b> <b>20540---31.A</b> 1-10V <b>20540---31.D</b> DALI	<b>20540---41</b> <b>20540---41.A</b> 1-10V <b>20540---41.D</b> DALI

**6,5W LED 705 lm CRI > 85**  
62° ^  
max 350mA  
alimentatore elettronico SELV non incluso  
*remote SELV electronic driver not included*

Colore standard 1 settimana  
*Standard color 1 week*

○ **.01** Bianco  
*White (matt)*

Colore su richiesta 2 settimane  
*Upon request color 2 weeks*

● **.19** Grigio argento  
*Silver grey (matt)*

● **.22** Nero  
*Black (matt)*

● **.45** Ruggine  
*Rust*

## ACCESSORI / ACCESSORIES



**22017**  
Alimentatore IP20 1050mA  
1 per max 10 Point 3 3W  
LED driver IP20 1050mA  
1 for max 10 Point 3 3W



**22001**  
Alimentatore IP20 350mA  
1 per max 2 Point 3 6,5W  
LED driver IP20 350mA  
1 for max 2 Point 3 6,5W