

POINT SPOT

design Lucitalia



Point Spot è un proiettore per illuminazione d'accento dalle ridottissime dimensioni e a bassa tensione. Ideale per enfatizzare elementi architettonici; grazie al suo indice di protezione IP 67, risulta inoltre particolarmente indicato per luoghi dove si presenta necessaria un'elevata protezione contro umidità e acqua quali bagni, spa, docce etc. disponibile anche nella versione in acciaio inox.

Point Spot is a projector for accent lighting. It's elegant design makes it ideal for lighting commercial and residential spaces, offices and museums. Particularly suitable for environments where an high IP rate is compulsory such as bathrooms, spas, showers, etc .. available in version round stainless steel.

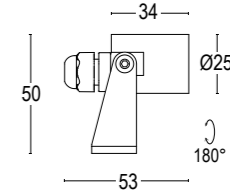



POINT SPOT




POINT SPOT 1 RD

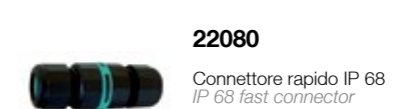
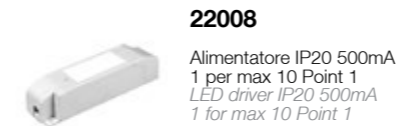
IP67 - Classe III - CE / F



	3000K	4000K
	20527---31 20527---31.A 1-10V 20527---31.D DALI	20527---41 20527---41.A 1-10V 20527---41.D DALI
	1,5W LED 170 lm CRI > 85 16° ^ max 500mA alimentatore elettronico SELV non incluso <i>remote SELV electronic driver not included</i>	

	3000K	4000K
	20526---31 20526---31.A 1-10V 20526---31.D DALI	20526---41 20526---41.A 1-10V 20526---41.D DALI
	1,5W LED 170 lm CRI > 85 32° ^ max 500mA alimentatore elettronico SELV non incluso <i>remote SELV electronic driver not included</i>	

ACCESSORI / ACCESSORIES



Colore standard 1 settimana
 Standard color 1 week

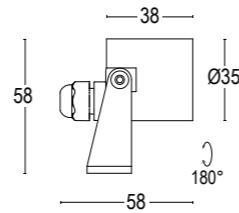
○ **.01** Bianco
 White (matt)

Colore su richiesta 2 settimane
 Upon request color 2 weeks

● **.19** Grigio argento
 Silver grey (matt)
 ● **.22** Nero
 Black (matt)
 ● **.45** Ruggine
 Rust

POINT SPOT 2 RD

IP67 - Classe III - CE / F



3000K **4000K**

20529---31	20529---41
20529---31.A 1-10V	20529---41.A 1-10V
20529---31.D DALI	20529---41.D DALI

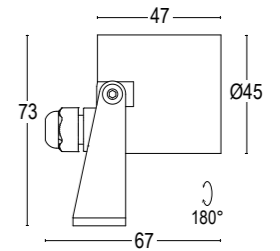
2W LED 225 lm CRI > 85
 13° ^
 max 700mA
 alimentatore elettronico SELV non incluso
remote SELV electronic driver not included

20528---31	20528---41
20528---31.A 1-10V	20528---41.A 1-10V
20528---31.D DALI	20528---41.D DALI

2W LED 225 lm CRI > 85
 47° ^
 max 700mA
 alimentatore elettronico SELV non incluso
remote SELV electronic driver not included

POINT SPOT 3 RD

IP67 - Classe III - CE / F



3000K **4000K**

20555---31	20555---41
20555---31.A 1-10V	20555---41.A 1-10V
20555---31.D DALI	20555---41.D DALI

3W LED 315 lm CRI > 85
 10° ^
 max 1050mA
 alimentatore elettronico SELV non incluso
remote SELV electronic driver not included

20556---31	20556---41
20556---31.A 1-10V	20556---41.A 1-10V
20556---31.D DALI	20556---41.D DALI

3W LED 315 lm CRI > 85
 37° ^
 max 1050mA
 alimentatore elettronico SELV non incluso
remote SELV electronic driver not included

20531---31	20531---41
20531---31.A 1-10V	20531---41.A 1-10V
20531---31.D DALI	20531---41.D DALI

6,5W LED 705 lm CRI > 85
 28° ^
 max 350mA
 alimentatore elettronico SELV non incluso
remote SELV electronic driver not included

20530---31	20530---41
20530---31.A 1-10V	20530---41.A 1-10V
20530---31.D DALI	20530---41.D DALI

6,5W LED 705 lm CRI > 85
 62° ^
 max 350mA
 alimentatore elettronico SELV non incluso
remote SELV electronic driver not included

ACCESSORI / ACCESSORIES

22014

Alimentatore IP20 700mA
 1 per max 10 Point 2
 LED driver IP20 700mA
 1 for max 10 Point 2

22080

Connettore rapido IP 68
 IP 68 fast connector

Colore standard 1 settimana
 Standard color 1 week

○ **.01** Bianco
 White (matt)

Colore su richiesta 2 settimane
 Upon request color 2 weeks

● **.19** Grigio argento
 Silver grey (matt)
 ● **.22** Nero
 Black (matt)
 ● **.45** Ruggine
 Rust

ACCESSORI / ACCESSORIES

22017

Alimentatore IP20 1050mA
 1 per max 10 Point 3 3W
 LED driver IP20 1050mA
 1 for max 10 Point 3 3W

22001

Alimentatore IP20 350mA
 1 per max 2 Point 3 6,5W
 LED driver IP20 350mA
 1 for max 2 Point 3 6,5W

Colore standard 1 settimana
 Standard color 1 week

○ **.01** Bianco
 White (matt)

Colore su richiesta 2 settimane
 Upon request color 2 weeks

● **.19** Grigio argento
 Silver grey (matt)
 ● **.22** Nero
 Black (matt)
 ● **.45** Ruggine
 Rust