

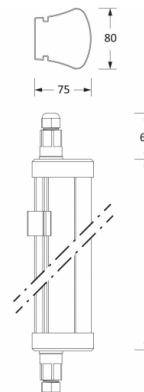
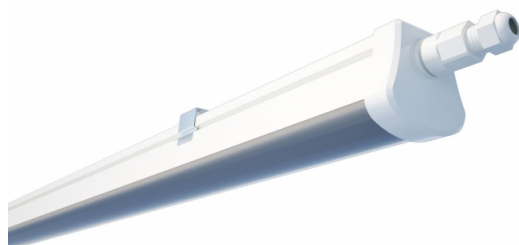
19401.01

## La stagna 2.0

La Stagna 2.0

Electronic driver ballast and brackets ceiling/wall included.  
Suspensions to be ordered separately.  
Diffuse emission.

01 white



L: 1225 mm



### Installations

IP65 LED system (single or continuous rows) for ceiling installation and wall brackets included and suspended with special cables steel adjustable, sold separately (necessary No.2 suspensions for each appliance).

### Material

Body, end caps in white polycarbonate. Screen co-extruded polycarbonate opal lined. No.2 brackets for ceiling installation, in harmonic steel.

### Wiring

Electronic power supply for LED integrated 220-240V 50/60Hz. With No.2 cord grip for the continuity of line, an appropriate terminal supplied, suitable for stand-alone installations or for closing a continuous line). Power cable with outer sheath D = 5-8mm not included.

Supply voltage: 220-240V 50/60Hz

**Total power: 40W**

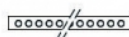
### Photobiological Risk

Certified device in RISK GROUP 1 (Low Risk)-The lamp does not pose a hazard due to normal behavioral limitations on exposure - in accordance with CEI EN 62471:2010.

### Compliance

In accordance with standard: CEI EN 60598-1:2008 + A11:2009, IEC 60598-2-1.

### Sources



Type: LED  
Color: white  
Power: 38W  
Color temperature: 4000K  
CRI: >80

**Nominal flux (Tc=25°C): 4050 lm**  
Lifespan (Ta=25°C): 50000h L80  
Lamp included

### Photometric data

**Luminous flux (Ta=25°C): 3810 lm**

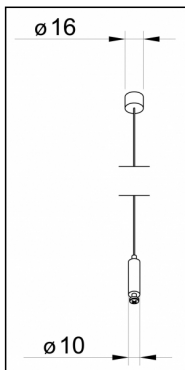


19401.01

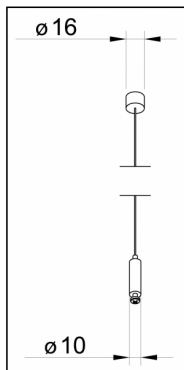
## La stagna 2.0

La Stagna 2.0

### Accessories



**12119.99**  
Adjustable  
suspensions  
(1pc)  
L=3000mm



**12118.99**  
Adjustable  
suspensions  
(1pc)  
L=1200mm