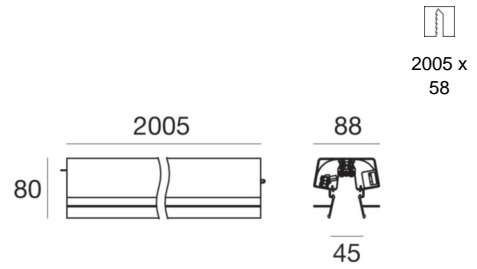
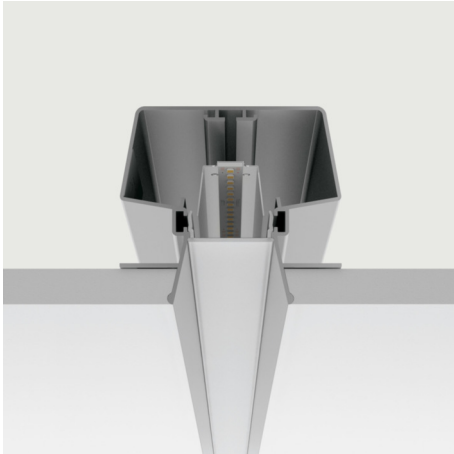




Lines | 198-264 V | topLED 29 W 700 mA | Modular | CRI 80
65043



Technical data	
Collection	traddel
Installation position	Ceiling
Installation environment	Indoor
Light Source	LED
Circuit structure	topLED
Optic	Diffused
Power	29 W
Luminous flux (source)	4040 lm
Frequency	50 - 60 - Hz
CCT / Tonalità	3000 K
Colour rendering index	80 Ra
AC / DC	AC-DC
Safety class	1
IP	IP40
Glow wire test	850°
Direct mounting on normally flammable surfaces	Yes
CE	Yes
ETL	No
Driver included	Yes
Induzione	No
Emergency mode	No
Motion sensor	No
Directional	No
Tilting	No
Walk-over	No
Drive-over	No
Cable included	No
Resin potting	No

Finishing casing	
Material	Aluminium
Processing	Coating

Finishing diffuser	
Material	PC
Colour	opaline



Lines | 198-264 V | topLED 29 W 700 mA | Modular | CRI 80
65043

Single emission lines for indoor application. The warm white LED light source with a diffused light distribution is composed of 260 topLEDs with CCT of 3000 K and a CRI 80; the source luminous flux is 4040 lm, with a 139.3 lm/W nominal luminous efficacy.

The device body is made of aluminium, processed by means of coating; the diffuser is made of PC. The ingress protection degree is IP40; The power supply driver is included in the delivery.

The total absorbed power is 29 W.

The device features protection class I and can be ceiling-mounted, with a 2005 x 2005 mm hole (in plasterboard).

Illuminotechnical Features

Luminous flux (source)	4040 lm
Colour temperature	3000 K
Colour rendering index	80 Ra



Giunzione

Code

62180

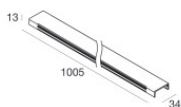


Connettore

Cable gland: no; colors: nero.

Code

60127



Diffusore

Code

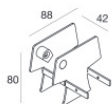
65056



Diffusore

Code

65057



Tappo

Code

65044