

15801.02

## Drive mini

Drive mini LED single beam emission

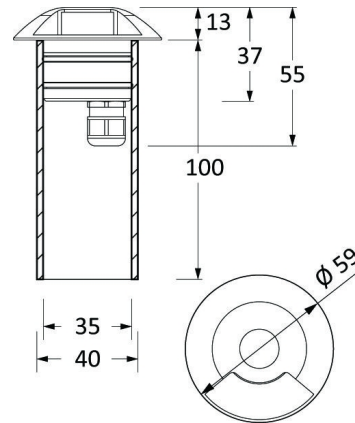
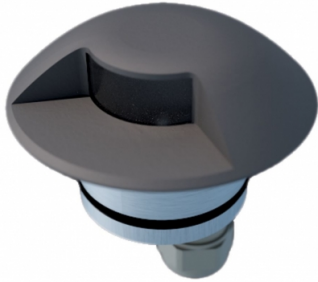
Suitable for recessed installation in concrete wall.

Emission: grazing light.

Casing made in polyethylene included.

24V electronic driver to be ordered separately.

02 black



D: 59 mm  
H: 55 mm



### Installations

To install into floor/ground or in concrete wall by the apposite casing included.

### Material

Body made of anodized aluminium alloy, upper cap made of die-cast aluminium, finished by antioxidant cataphoresis and powder coated; led module entirely resin soaked, transparent optical casing made of polyethylene.

### Wiring

Complete with cord grip made of nylon and with H05RN-F L=500mm power supply cables.  
Separated electronic stabilized driver 24Vdc 220-240V 50/60Hz (to be ordered separately)

Supply voltage: 24Vdc

### Photobiological Risk

Certified device in EXEMPT GROUP, in accordance with CEI EN 62471:2010.

### Compliance

In accordance with standard: CEI EN 60598-1:2008 + A11:2009, IEC 60598-2-13.

### Sources

Color: white

Power: 2W

Color temperature: 3000K

CRI: >80

**Nominal flux (Tc=25°C): 160 lm**

Lifespan (Ta=25°C): 50000h L70

Lamp included

### Photometric data

**Luminous flux (Ta=25°C): 5 lm**

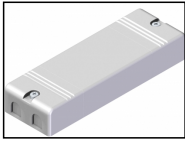


15801.02

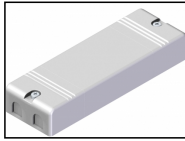
## Drive mini

Drive mini LED single beam emission

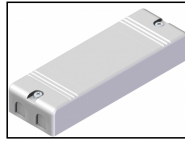
### Accessories



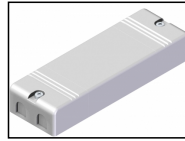
**E924K0010KK**  
Electronic  
stabilized driver  
24Vdc max 10W



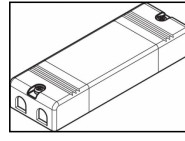
**E924K0035KK**  
Electronic  
stabilized driver  
24Vdc max 35W



**E924K0075KK**  
Electronic  
stabilized driver  
24Vdc max 75W



**E924K0100KK**  
Electronic  
stabilized driver  
24Vdc 96W max  
IP67



**E924K1100KK**  
Electronic  
stabilized driver  
24Vdc 96W max