

15601.09

Ground mini


Ground mini LED single beam emission ring made of AISI 316L stainless steel

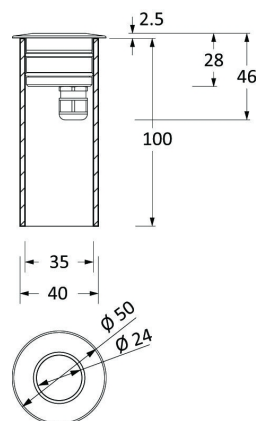
Drive-over MAX 1000Kg of static load.

Emission: grazing light.

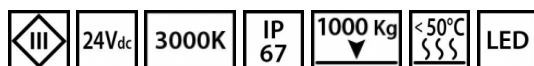
Casing made of polyethylene included.

24V electronic driver to be ordered separately.

 09 polished stainless steel



D: 50 mm
H: 46 mm



Installations

To install into floor/ground or in concrete wall. drive-over MAX 1000Kg of static load.

Material

Body made of anodized aluminium alloy, ring made of brushed AISI 316L stainless steel; casing made of polyethylene.

Flat screen made of transparent extra-clear tempered glass with thickness 5mm.

Wiring

Complete with cord grip made of nickel-plated brass and with H05RN-F L=500mm power supply cables.

Separated electronic stabilized driver.

Supply voltage: 24Vdc 220-240V 50/60Hz

Photobiological Risk

Certified device in EXEMPT GROUP, in accordance with CEI EN 62471:2010.

Compliance

In accordance with standard: CEI EN 60598-1:2008 + A11:2009, IEC 60598-2-2, IEC 60598-2-13.

Sources

Color: white

Power: 2W

Color temperature: 3000K

CRI: >80

Nominal flux (Tc=25°C): 160 lm

Lifespan (Ta=25°C): 50000h L70

Lamp included

Photometric data

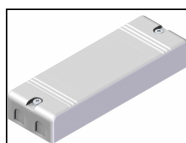
Luminous flux (Ta=25°C): 20 lm

15601.09

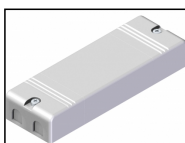
Ground mini

Ground mini LED single beam emission ring made of AISI 316L stainless steel

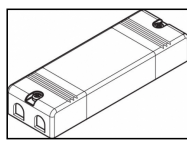
Accessories



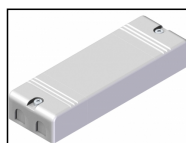
E924K0010KK
Electronic
stabilized driver
24Vdc max 10W



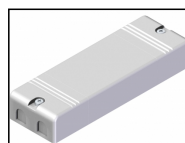
E924K0035KK
Electronic
stabilized driver
24Vdc max 35W



E924K1100KK
Electronic
stabilized driver
24Vdc 96W max



E924K0100KK
Electronic
stabilized driver
24Vdc 96W max
IP67



E924K0075KK
Electronic
stabilized driver
24Vdc max 75W